









## WE ARE YOUR SOLUTION

*Our Expertise :*

-  Civil Engineering
-  Electrical Engineering
-  Mechanical Engineering
-  Supply of Mechanical Parts
-  Supply of Electrical Parts
-  Supply of Construction Materials

**COMPANY  
PROFILE**

*With Hands on experience  
and strategic management experience  
our clients are in the Best hands*



## WHO WE ARE

**Mazothando (Pty) Ltd is a small and emerging enterprise which is 100% black woman owned company.**

Our main services are Aircraft Parts, Building Maintenance, Civil Engineering, Mechanical Engineering, Electrical Engineering, Tools and Machinery Supplier.

Mazothando is led by very experienced teams who are hands on and in coupled with the required skills. The team has gained extensive experience from the industry from the previous engagements in the industry. Our targeted clients are Government Departments, Small and Large Cooperates.

***We believe that safety and protecting the environment is good business and that all work related injuries, illnesses property losses and adverse environmental impacts are preventable.***

The company aims to develop professional associations with other progressive professional engineering and construction and supplier companies in the industry to form relations that allow Mazothando to provide comprehensive professional services.

*Mazothando*





## OUR CREDO

### MISSION



To add value to the country economic development by being a role player and partner of choice for Africa.

### VISION



We aim to deliver quality and professional services within time and budget with honesty and integrity.

## PROFESSIONAL ASSOCIATIONS

The company aims to develop professional associations with other progressive professional engineering and construction and supplier companies in the industry to form relations that allow Mazothando to provide comprehensive professional services.

*With Hands on Experience and Strategic  
Management Experience our  
Clients are in the Best Hands.*

# WHAT WE DO



## Mechanical Engineering

Our mechanical engineers are equipped with the latest mechanical design, drafting and simulation software.

We offer our mechanical engineering services as either a standalone service or as part of our turnkey project offering.

### Our Area of Expertise includes:

- Construction and Fabrication of structural steel and piping
- Construction of walking rails
- Erection of steel storage tanks
- Overhaul of pumps & Installation of pumps
- Erection of steel storage tanks
- Assembly, Erection of Steel Plant Equipment
- Design of piping installations
- Installation and servicing of air conditioner.
- Cold room and refrigeration installation and maintenance



**100%**  
**Women**  
**Black-owned**  
**business and a**  
**BSEE Level 1.**



# WHAT WE DO



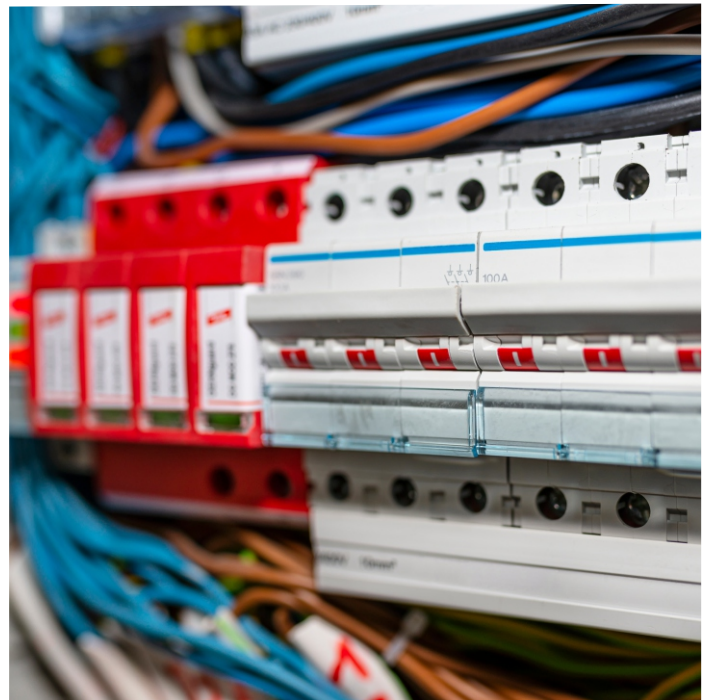
## Electrical Engineering

Mazothando (Pty) Ltd can Design, plan and develop electrical systems for various sectors to ensure safety and compliance with relevant standards and regulatory requirements.

We are conversant with the Occupational Health and Safety Act and Mines Health and Safety Act as well as regulations for electrical equipment and machinery to ensure safety and compliance of designs.

### Our Area of Expertise includes:

- Outdoor Substation erection
- Solar Plant Installation
- Generator Installation & Electrical Motor installation
- Fiber Optic Cable Installation & Splicing
- Electrical Panel Construction ( Gen Change Over Panels & MCC)
- Electrical Panel Construction (IT Cabinets (CCTV & Access control units)
- Metering
- Power Line Construction
- Substation Construction
- Commercial & Domestic Building reticulation
- Substation Switch gear Installations
- Substation Maintenance & Testing
- Substations Commissioning & Testing
- Retrofits (Circuit Breakers, Protection Schemes)



*With Hands on experience  
and strategic management experience  
our clients are in the Best hands*

**COMPANY PROFILE**

# WHAT WE DO



## Civil Engineering



At Mazothando (Pty) Ltd we also specialised in the area of civil construction and building Development with an extensive presence in small, medium to large scale construction contracts across South Africa.

### Our Expertise includes:

- Bulk Earthworks
- Storm Water Construction/installation
- Paving, Kerbs & Channels
- Road works
- Concrete Works
- Complete Building Construction
- Township Infrastructure
- Substation Civil
- Equestrian Arenas
- Bulk Pipeline installation (Hdpe, steel, Upvc, asbestos cement and pvc)
- Sewerline installation
- Pump station construction and Maintenance
- Irrigation
- Reservoir construction and maintenance
- Road marking check with cidb



100%  
**Women  
Black-owned**

**COMPANY PROFILE**



# WHAT WE DO



## Supply of Mechanical Parts

### ➤ AIRCRAFT PARTS SALES

As a supplier of aircraft parts we cover a wide variety of aircraft's flying around Africa. Will help you with any parts and components no matter what you fly.

### ➤ CONSIGNMENT SALES

We will help you sell your stock or help you with storage! We also specializes in helping private parties/operators protect and get the most out of their assets.

### ➤ TOOLS AND MACHINERY SUPPLIERS

We supply the best quality from the trusted brands. If you can't find what you are looking for above, we may still be able to find the right tool for you.

### ➤ SUPPLY OF MINING SPARE PARTS



**100%**  
**Women**  
**Black-owned**  
business and a  
**BSEE Level 1.**

**COMPANY PROFILE**

# WHAT WE DO



## Supply of Electrical Parts



We offer excellent service and recommend the right tools and supplies for your next project.

*Amongst the vast spectrum of products we sell, we are Distributors and Suppliers of:*

- Extension Cords and Power Strips
- Plugs and Receptacles
- Switches
- Conduit
- Conduit Fittings and Connectors
- Conduit Mounting and Strut
- Counters and Hour Meters
- DataCom and Network
- Electrical Boxes and Covers
- Electrical Enclosures
- Encoders
- Fuses
- Ground Fault Protection (GFCI)
- Lighting Controls and Sensors
- Power Supplies
- Programmable Logic Controllers (PLC)
- Push Buttons
- Raceways
- Relays
- Safety Switches
- Solar Panels and Accessories
- Solenoids
- Starters and Contactors
- Strain Relief
- Temperature Controls
- Terminal Blocks and Accessories
- Timers
- Transformers
- Voltage Regulation Cable and Wire
- Wire Connectors
- Wire Management
- Wireways
- Replacement Parts

*With Hands on experience  
and strategic management experience  
our clients are in the Best hands*

**COMPANY PROFILE**



# WHAT WE DO

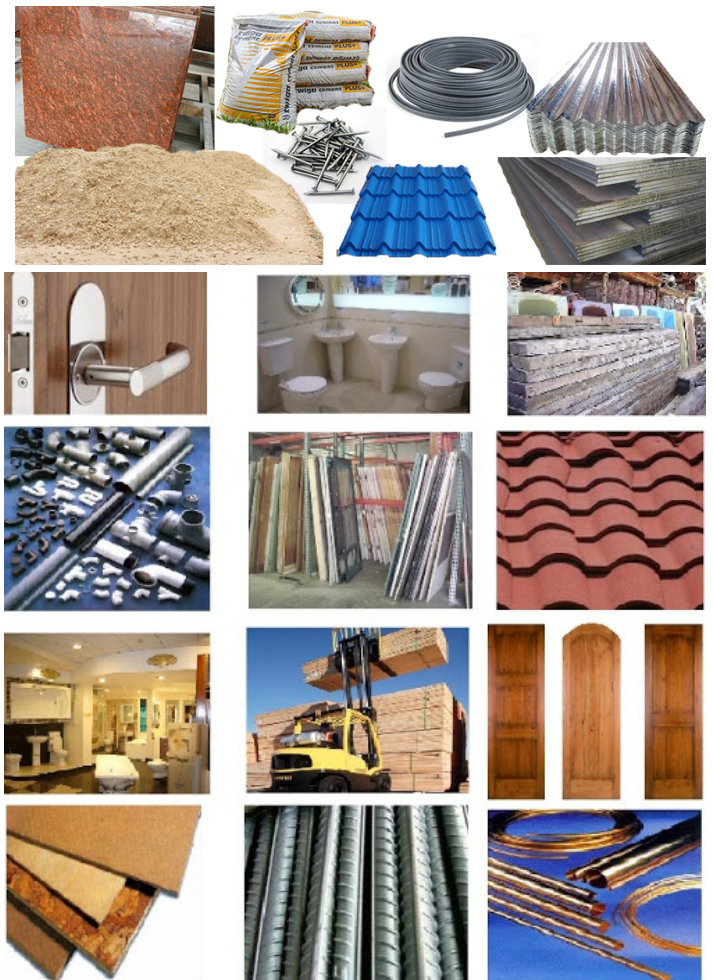


## Supply of Construction Materials

In the fast paced business of commercial construction you need a company with excellent service that pays attention to detail. **Mazothando (Pty) Ltd** is here to answer your questions and meet your needs where the supplier and distribution of civil construction and building material is concern.

***Some of the materials we can supply includes the following:***

- Glass
- Bricks : Face brick, Plaster & Block
- Lintels
- Building Columns
- Concrete Products
- Fencing : ***Gates, Post & Stay & Droppers, Wire & Mesh***
- Steel
- Reinforcing and Underlay
- Cement : ***32.5, 42.5, 52.5, Additives***
- Cast Iron



**100%**  
**Women**  
**Black-owned**  
**business and a**  
**BBEE Level 1.**



**COMPANY PROFILE**

# Environmental, Health and Safety Policy

**Mazothando (Pty) Ltd** is committed to ensuring a safe and healthful workplace and protecting the environment. We believe that safety and protecting the environment is good business and that all work-related injuries, illnesses, property losses and adverse environmental impacts are preventable.



## To achieve this commitment, our Company will:

Provide personnel with sufficient training, resources and systems.

Provide and maintain properly engineered facilities, plants and equipment.

Minimize waste generation, air emissions and other discharges from our activities to the environment.

Actively monitor, audit and review to improve systems, processes, health, safety and environmental performance.

Ensure that management accepts full responsibility for protecting workers and the environment.

Give health, safety and environmental considerations equal status with the Company's other business objectives and integrate them into all aspects of our work. Work actively to continuously improve health, safety and environmental performance.

Only start work after confirming that essential health, safety and environmental protection systems are in place, and willingly suspend activities if safety, health or the protection of the environment would be compromised.

Encourage supervisors and workers (employees and contractors) to be individually responsible for identifying and eliminating hazards, preventing injury to themselves and others, and preventing adverse environmental impacts.

***We firmly believe responsibility for application of this policy rests with management, employees and contractors associated with our Company.***



# Our Clients



*With Hands on experience  
and strategic management experience  
our clients are in the Best hands*

**100%**  
**Women  
Black-owned**  
business and a  
**BBEE Level 1.**



## Corporate Information

Company Name : MAZOTHANDO PTY (LTD.)

Reg. Number : 2014/134584/07

BBBEE Level : LEVEL 1

CSD Number : MAAA0073783

VAT NO : 4020269728

CIDB NO : 10074955

## GET IN TOUCH



+27 76 811 6851  
+27 81 362 2070



[mazo@mazothando.com](mailto:mazo@mazothando.com)



### Johannesburg Office

1 Maple Road, Kyalami Hills,  
Midrand, 1685

### Cape Town Office

6 Thankeka Street, Malunga Park  
Guguletu , 7750

### Durban Office

Suite No: 22/24, 220 Fairway  
Virgina Airport, 4016

### Newcastle Office

1432 Section 2 , Madadeni,  
2951

## Accreditation



labour

Department:  
Labour  
REPUBLIC OF SOUTH AFRICA



[www.mazothando.com](http://www.mazothando.com)